

## Reitnouer Big Bubba

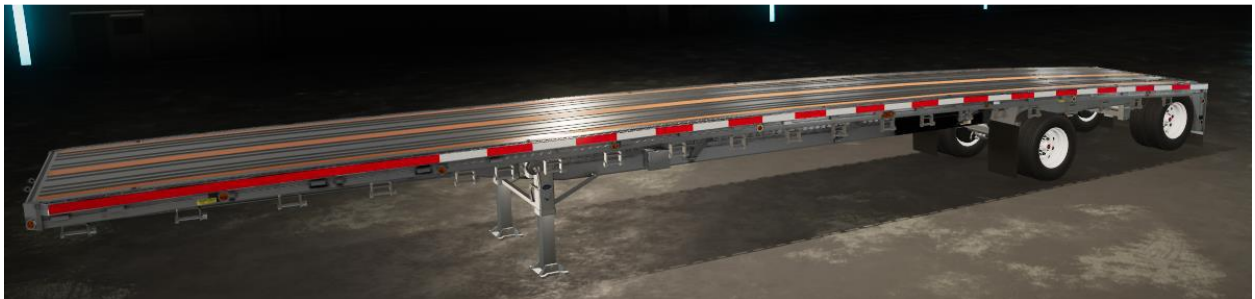


Big Bubba flatbed models boast a GVWR of 100,000 lbs. and are rated at 70,000 lbs. in 10 feet and 60,000 lbs. in 4 feet — a legend that continues to set the standard for heavyweights. Not bad for a trailer that weighs an average of 3,000 lbs. less than any steel trailer even approaching Big Bubba's hauling capacity.

This is 4MR's Reitnouer Big Bubba from FS19. I have added axle options, dunnage and storage box options, stake options, bulkhead, and updated it to work in FS22, and added the autoload function.

Storage Box Options:

None

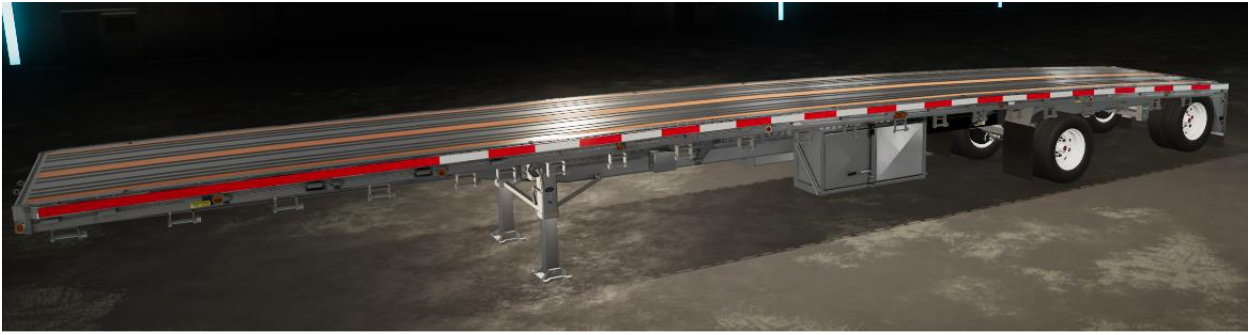


Front

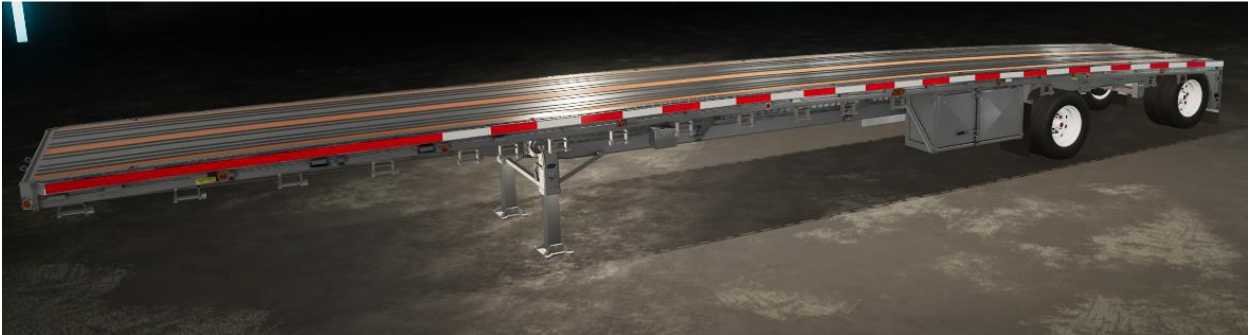


# Reitnouer Big Bubba

Middle



Rear



Split Tandem

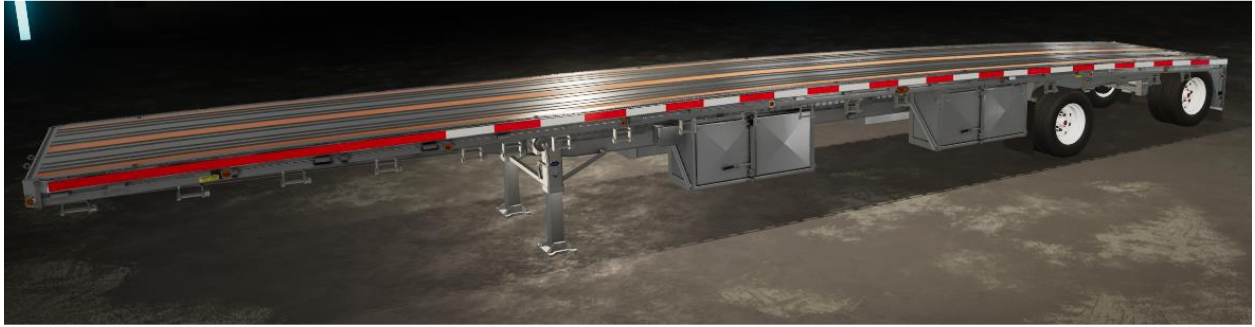


Front and Middle



# Reitnouer Big Bubba

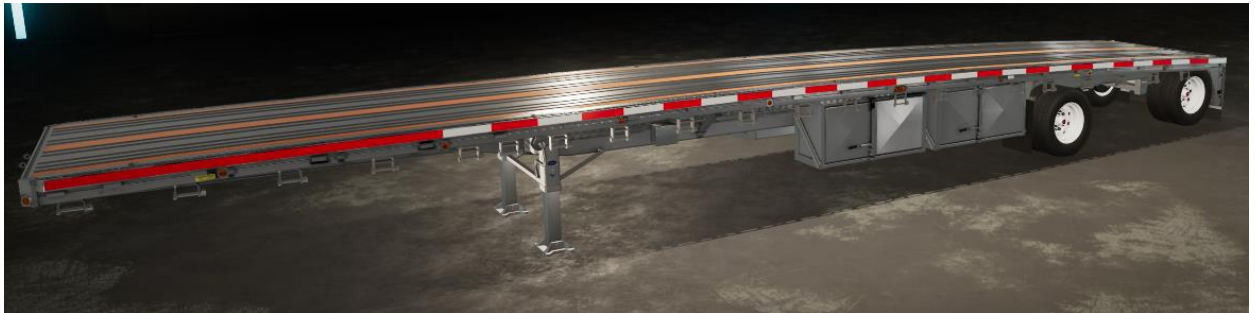
Front and Rear



Front and Split



Middle and Rear



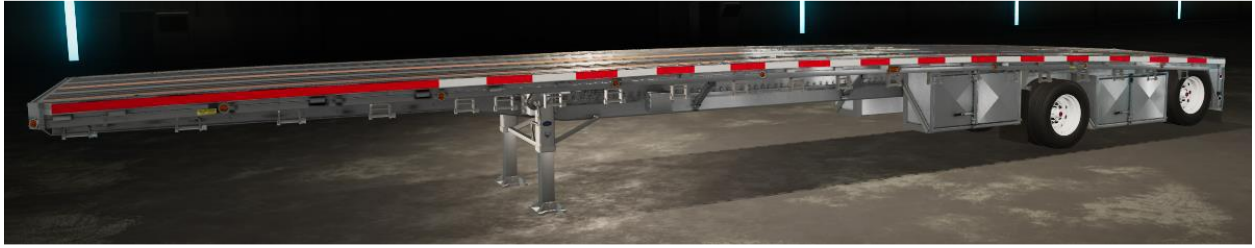
Middle and Split



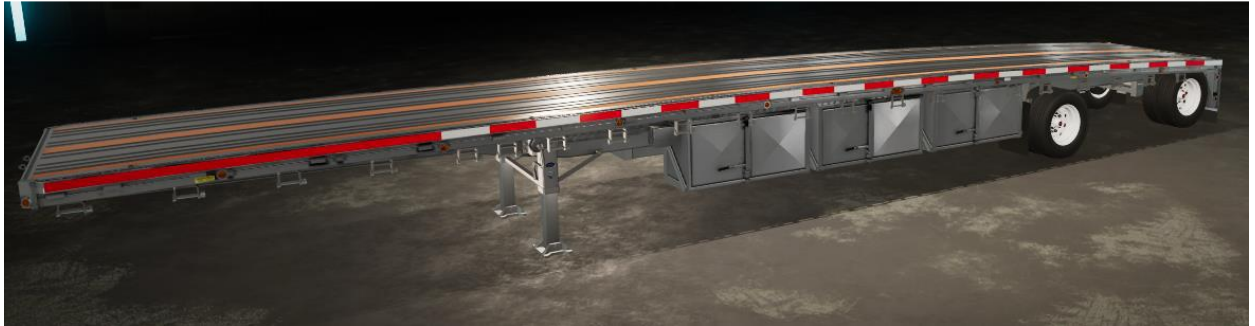


# Reitnouer Big Bubba

Rear and Split



Front Middle and Rear



Front Middle and Split



Front Rear and Split



# Reitnouer Big Bubba

Middle Rear and Split



All



Dunnage Storage Option:  
No



Yes



## Reitnouer Big Bubba

Rear Strobes:  
No



Yes





## Reitnouer Big Bubba

Oversize Load Sign

No



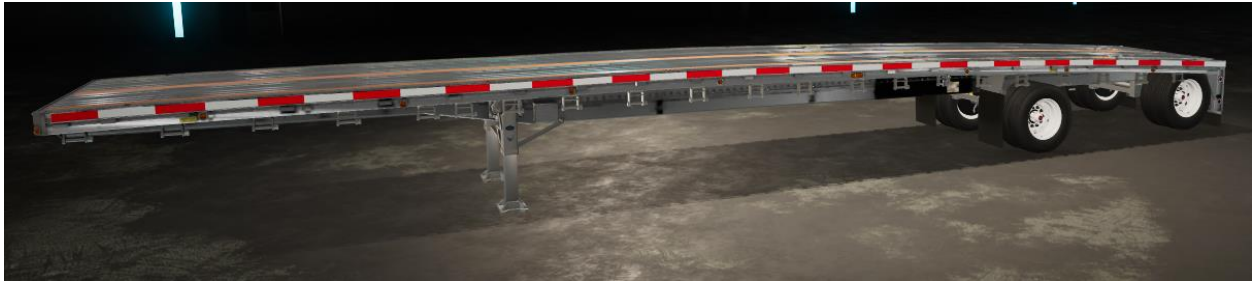
Yes



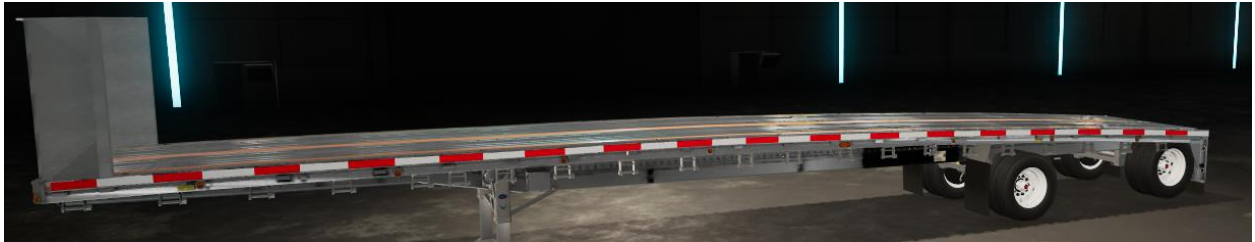
# Reitnouer Big Bubba

Stakes:

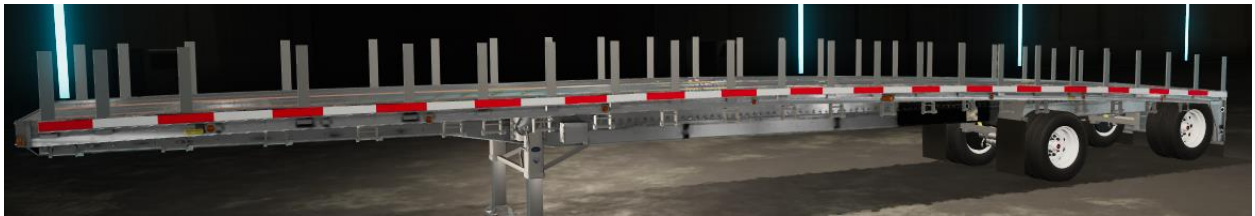
No



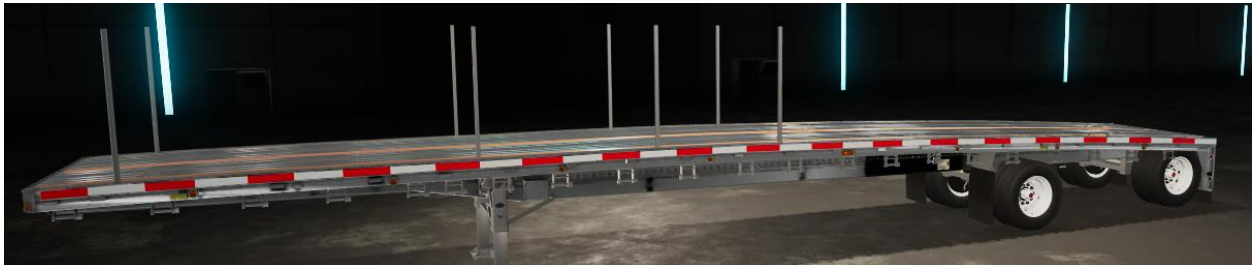
DOT Wrap Around Bulkhead



Short Stakes



Front Log



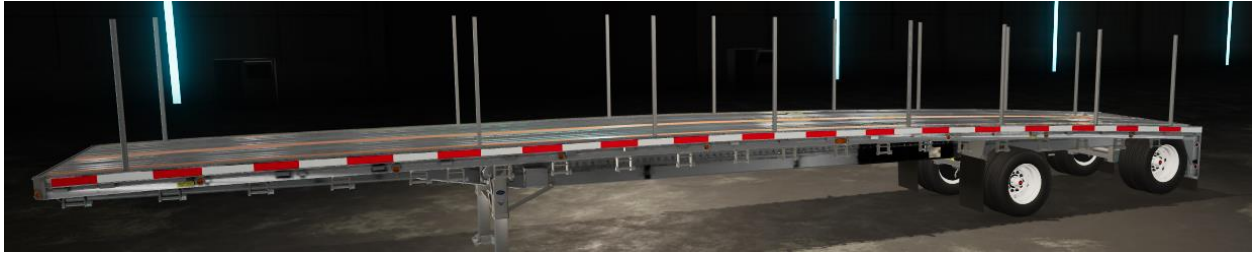
Rear Log



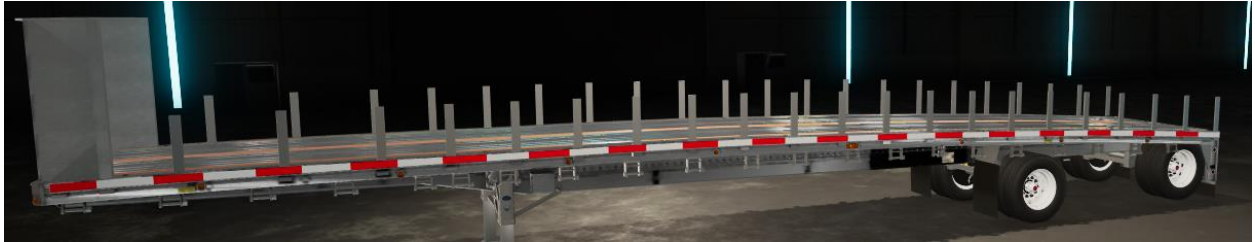


# Reitnouer Big Bubba

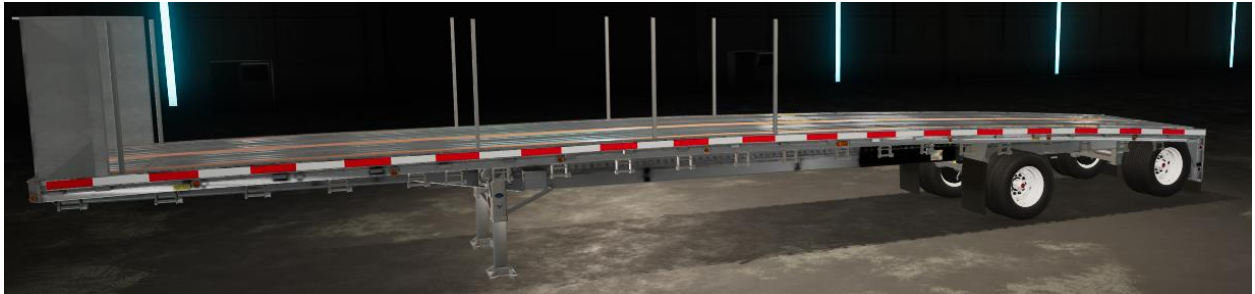
Front and Rear Log



Short Stakes and Bulkhead



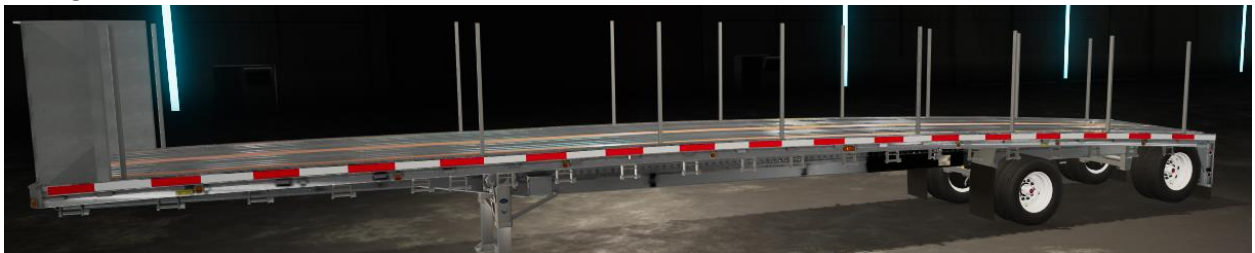
Front Log and Bulkhead



Rear Log and Bulkhead

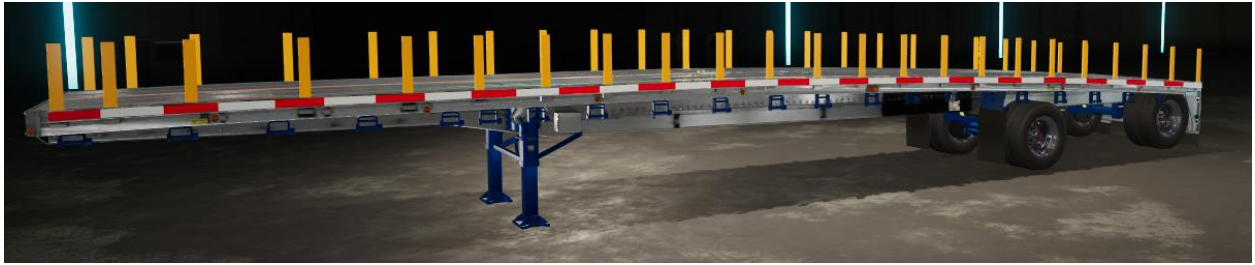


All Log and Bulkhead



# Reitnouer Big Bubba

Chassis, Stake, and wheel color selection



License plate:



Attacher joint for 10ft Shipping Container:





# Reitnouer Big Bubba

Axle Options:  
Spread Tandem



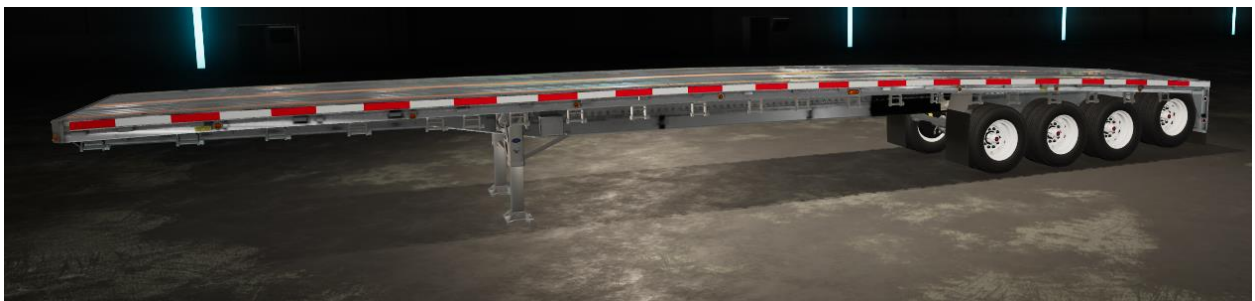
Tridem



Pacific Northwest Quad



Quad





# Reitnouer Big Bubba

Tridem Steering Pusher



Tridem Pusher



Pentuple Outer Steer



Quad Outer Steer Pusher

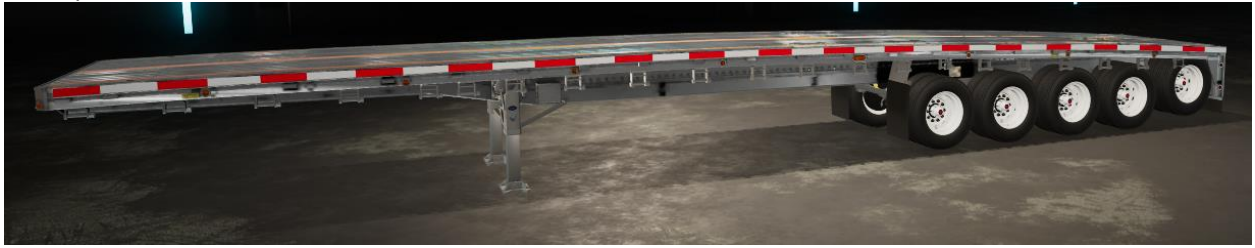


Quad Pusher



# Reitnouer Big Bubba

Pentuple



Steer Tridem Quad



Tridem Quad



# Reitnouer Big Bubba

## Lift Axles



Axle 1 (from left to right): AXIS\_FRONTLOADER\_TOOL3 (pc lshift + lctrl + j/n)

Axle 2: AXIS\_FRONTLOADER\_TOOL2 (pc lshift + k/m)

Axle 3: AXIS\_FRONTLOADER\_ARM2 (pc lshift + j/n)

Axle 4: AXIS\_FRONTLOADER\_TOOL (pc k/m)

Axle 5: not movable

Axle 6: not movable

Axle 7: AXIS\_FRONTLOADER\_ARM (pc j/n)